

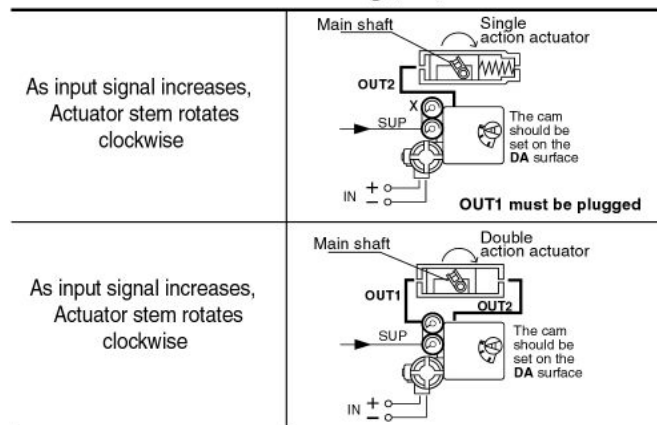


Dodge Engineering & Controls Inc.
 196 Riverneck Road
 Chelmsford, MA 01824
 (978) 244-1200 Fax (978)244-1422

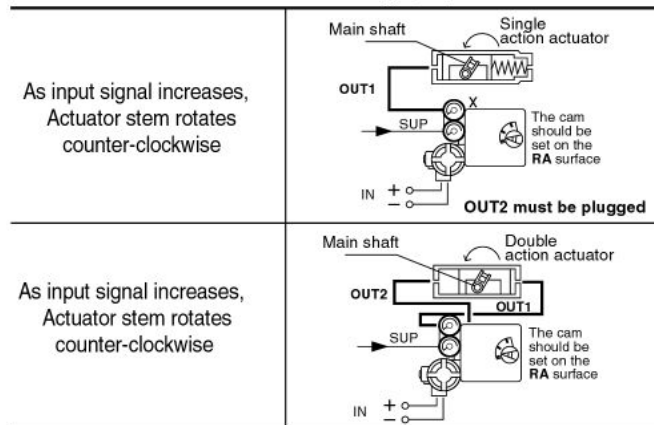
**INSTALLATION & MAINTENANCE
 MANUAL
 EPR SERIES
 ELECTRO-PNEUMATIC
 POSITIONER**

Air Connections

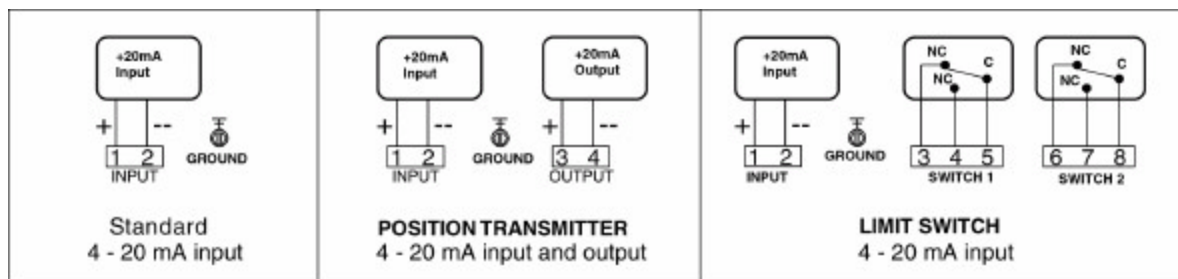
Direct Acting (DA)



Reverse Acting (RA)



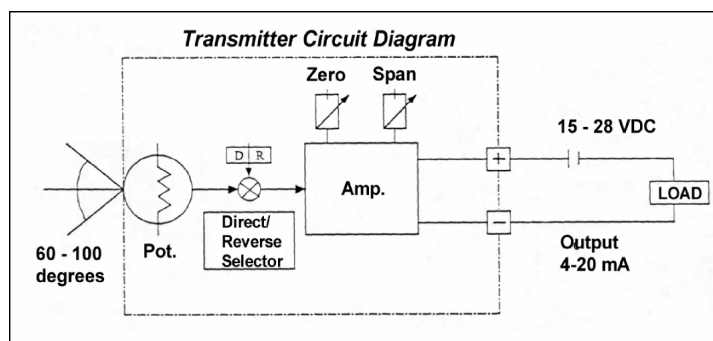
Wire Diagrams



CAUTION: Always check that the electrical load is within the range stated on the nameplate. Failure to remain within electrical ratings may result in damage to or premature failure of the electrical switches, sensors or transmitter electronics.

Specifications – Current Output

Power Supply Rating: 15 – 28 VDC loop power
 Recommended Power Supply: 24VDC
 Output Signal: 4 – 20 mA
 Operating Temperature: -4° to 158° F
 Load Impedance: 0 – 600 ohms
 Max. Output: 35 mA DC
 Linearity: ± 1.0 %
 Hysteresis: 1.0% of full scale
 Repeatability: ± 0.5 % of full scale
 Adjustment: Zero and Span in Terminal Box



Specifications – Limit Switches

Contacts: SPDT Form C
 AC Rating: 5A – 125 VAC / 3A – 250 VAC
 DC Rating: 1A – 24 VDC
 Adjustment: cams with set screws